



## Type of Scrap: # 1 Bundles

### IRON & STEEL SCRAP SPECIFICATIONS

#### Specifications

New black steel sheet scrap, clippings or skeleton scrap, compressed to charging box size. May not include old auto body or fender stock. Free of metal coated, vitreous enameled, and electrical sheet containing over 0.5 percent silicon. Material should be alloy free and 1000 series carbon steel. May not include mandrel bundles unless specifically inspected for approval. Minimum density: 75 lbs per cu. ft.

#### Typical Chemistry (%; max)

Copper 0.100  
Chrome 0.050  
Nickel 0.050  
Tin 0.005  
Phosphorous 0.010  
Sulphur 0.010  
Silicon 0.150  
Molybdenum 0.015

#### Dimension (inches; max)

24" x 24" x 36"

#### Pictures





## Type of Scrap: **Busheling**

### **IRON & STEEL SCRAP SPECIFICATIONS**

#### **Specifications**

Clean steel scrap including new factory busheling (for example, sheet clippings, stampings, etc.). May not include old auto body and fender stock. Free of metal coated, vitreous enameled and electrical sheet containing over 0.5 percent silicon. Material should be alloy free and 1000 series carbon steel. May not include mandrel bundles unless specifically inspected for approval. Minimum density: 50 lbs per cu.ft.

#### **Typical Chemistry (%; max)**

Copper 0.100  
Chrome 0.050  
Nickel 0.050  
Tin 0.005  
Phosphorous 0.010  
Sulphur 0.010  
Molybdenum 0.020

#### **Dimension (inches; max)**

60" x 24"

#### **Pictures**





Type of Scrap: P&S / Plate

## IRON & STEEL SCRAP SPECIFICATIONS

### Specifications

#### Description:

Cut plate and structural new production scrap, low residual chemistry. May include steel plates, structural beams, heavy gauge tubing and pipe. Pipe over 6" in diameter must be split in two. Not Allowed: Non-metallic, non-ferrous metals, excessive dirt, grease, oil, lead joints, tinplate, radioactive material, uncut tanks, cylinders, sealed units, electric motors, or high alloy steel.

#### Typical Chemistry (%;max)

Copper 0.140

Chrome 0.200

Nickel 0.300

Tin 0.010

Phosphorous 0.050

Sulphur 0.100

Silicon 0.060

Molybdenum 0.030

#### Dimension (inches; max)

48" X 24" X 12"

Density: 65 lbs/cf typical

Weight: 500 lbs maximum

Thickness: 3/16" minimum





**Type of Scrap: Rail Crops**

## **IRON & STEEL SCRAP SPECIFICATIONS**

### **Specifications**

**Description:**

This commodity is for railroad rail. Must be 3 feet long or smaller. No plates, spikes, wheels, cast iron, nails, knuckles, manganese material.

**Typical Chemistry (%;max)**

Carbon 0.86

Manganese 1.25

Phosphorus 0.020

Sulfur 0.020

Silicon 0.600

Nickel 0.25

Chromium 0.300

Molybdenum 0.060

**Dimension (inches; max)**

36" X 6" X 6"





**Type of Scrap: Railroad Wheels**

**IRON & STEEL SCRAP SPECIFICATIONS**

**Specifications**

**Description:**

This commodity is for steel railcar wheels. The axles must be cut off flush with the wheel on both sides or the axle must be pressed out of the wheel. No Side frames, bolsters, railroad rail, cast iron, or manganese material.

**Typical Chemistry (%;max)**

Carbon 0.590

Manganese 1.00

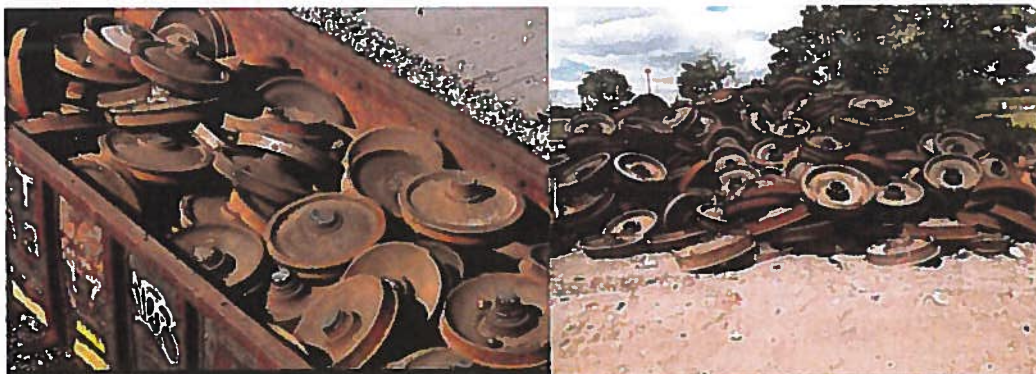
Phosphorous 0.045

Sulphur 0.050

Vanadium 0.080

**Dimension (inches; max)**

48" X 6"







Type of Scrap: **Shredded**

## IRON & STEEL SCRAP SPECIFICATIONS

### Specifications

Homogeneous iron and steel scrap, magnetically separated, originating from automobiles, unprepared No. 1 and No. 2 steel, miscellaneous baling and sheet scrap. Minimum density: 70 lbs per cu. ft.

#### Typical Chemistry (%; max)

Copper 0.28  
Chrome 0.100  
Nickel 0.110  
Tin 0.010  
Phosphorous 0.020  
Sulphur 0.040  
Silicon 0.200  
Molybdenum 0.040

#### Dimension (Inches; max)

### Pictures





This section illustrates the materials that **Big River Steel** will not accept from any of its suppliers. Please find below some examples and photos of materials that are not accepted.

## Materials Not Accepted

All grades of scrap must be free of hazardous material. The presence of this material is an **ABSOLUTE REJECTION** and the shipper/facility from where the contaminated scrap originated will be held liable for any and all costs, fines, or damages associated with the incidence. Further, this will warrant review of the shippers/facilities operation and a decision will be rendered whether to remove the company as a scrap supplier.

### Sealed & Flammable Containers

Propane Tanks



Gas Tanks



Aerosol Containers





## Materials Not Accepted

**PCB Containing Devices** (capacitors, ballasts  
microwave ovens etc)

Ballasts



Capacitors



Batteries



**Hydraulic Cylinders**



such as shock absorbers are not acceptable in loads of scrap.





## Materials Not Accepted

### Scrap Bearing Lead

Pipes with lead



Chemical tanks with lead lining



### Contaminants (dirt, wood, plastic, water, cement, tires, etc)

Wood



Tires



Cement





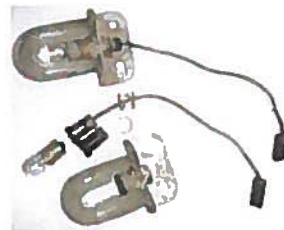
## Materials Not Accepted

**Miscellaneous items** (material containing Freon, transformers, liquids or sludge lead battery cable ends, heavy steel, mercury-containing devices, computers, electronics, etc.)

Air bag canisters



Mercury Switches



Electronics



Computers





## Materials Not Accepted

**Radioactive material** (military equipment, fertilizer related equipment, etc)

All grades of scrap must be free of radioactive contaminated material and/or radiation sources. The presence of this material is an **ABSOLUTE REJECTION** and the shipper/facility from where the contaminated scrap originated will be held liable for any and all costs, fines, or damages associated with the incidence. Further, this will warrant review of the shippers/facilities operation and a decision will be rendered whether to remove the company as a scrap supplier.

Radium dial



Smoke detectors

